

Main Specifications

Main Specifications

Rated Load / kg	3,000
Operating Weight / kg	10,000
Bucket Capacity / m ³	1.4 - 2.5
Wheelbase / mm	2,740
Overall Dimension / mm	7,322 * 2,348 * 3,182
Max. Drawbar Force / kN	98
Breakout Force / kN	114
Dump Clearance / mm	2,990
B-Pin Height / mm	3,917

Transmission

Transmission Type	Countershaft, Power Shift
Transmission Gears	F4/R2
Torque Converter Type	Single Stage, 3 Elements
Make & Model	Caterpillar & SEM TR100
Forward I / Reverse I	7.8 / 9.7
Forward II / Reverse II	14 / 30
Forward III / Reverse III	25 / NA
Forward IV / Reverse IV	39 / NA

Axle

Main Drive Type	Spiral Bevel Gear, Single Stage
Final Drive Reduction Type	Planetary Type, Single Stage
Rear - Oscillating +/-	±12°

Engine

Model	WDEC WP4.6NG135E502
Rated Power / kW / HP	99 / 133
Rated Speed / r/min	2,150
Displacement / L	4.6

Implement Hydraulic

Implement System Type	Open Center
Boom Raise Time / s	4.7
Hydraulic Cycle Time / s	8.3
System Pressure Setting / MPa	18

Brake System

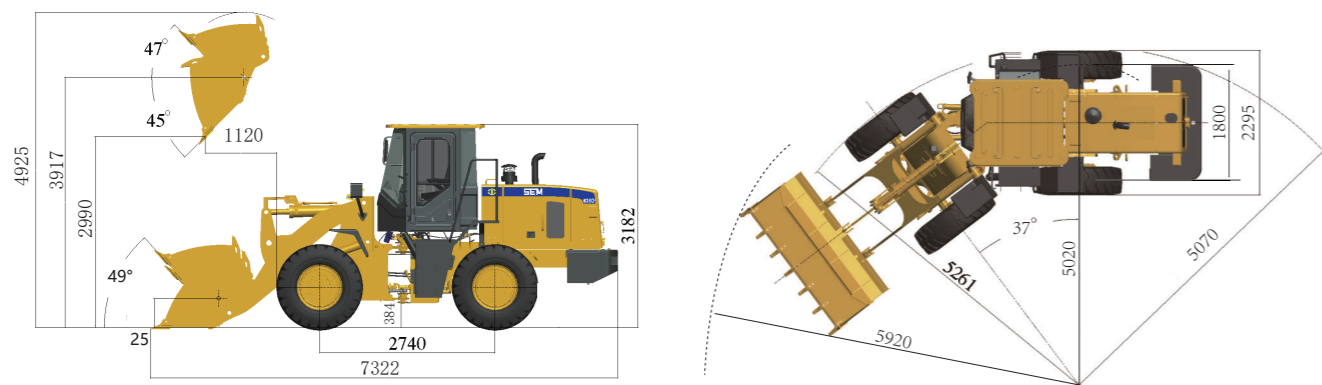
Service Brake	Dry & Caliper, Air to Oil
Parking Brake	Drum / Shoe

Steering System

System Type	Shared Flow
Steering Pump Type	Gear Pump
System Pressure Setting / MPa	14
Steering Angle (L / R)	37°±1°

Tires

Size	17.5-25
Type	Bias
Layer	12
Textured Type	L - 3



► Note: the above dimensions are based on the standard configuration.

SEM636D CEV Stage IV Wheel Loader



※ Featured machines in photos may include optional equipment

SEM636D CEV Stage IV

Product Advantages

- **High Productivity:** Performance series bucket with 110% fill factor, load more materials easily. Dump height is best in class
- **Best-in-class Reliability and Durability:** Made in-house transmission, well validated chassis and main components make machine more reliable
- **Excellent Fuel Economy:** Optimal match between engine and torque converter, hydraulic flow sharing technology make machine highly efficient and consume less fuel
- **Outstanding Operator Comfort:** Large interior space & AC cabin provide better visibility, premium seat with 6-stage adjustments enable operators work for longer hours comfortably

Gmmco Limited

CK Birla Group
No 6, G.S.T. Road, St. Thomas Mount, Chennai - 600 016.
Toll-Free No: 1800 425 2546 | E-mail: sales@gmmcoindia.com | Web: www.gmmco.in



Website <http://www.semmachinery.com>



A Caterpillar Brand